

주민 설문조사 결과

2015. 6. 24



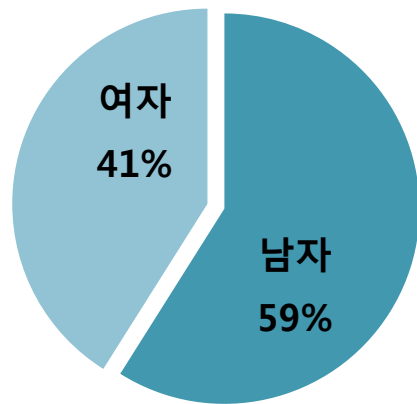
재정경제부 허가 제 38호, 원가계산용역 등록 제74호
재단법인 한국종합경제연구원

설문조사 개요

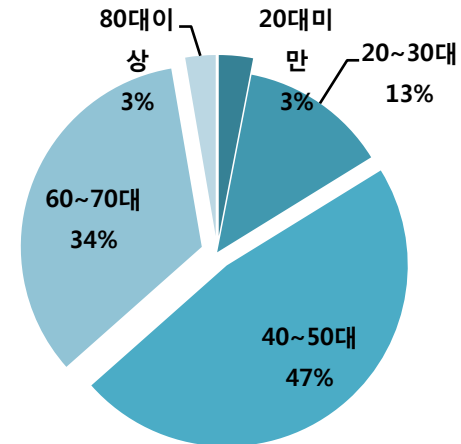
총 조사건수	6,498	응답율
문항별	6,470	99.6%
문항1	6,447	99.2%
문항2	6,437	99.1%
문항3	6,498	100.0%
문항4	6,425	98.9%
문항5	6,483	99.8%
문항6	6,470	99.6%
문항7	6,490	99.9%
문항8	6,472	99.6%
문항9	6,498	100.0%
문항10	3,597	55.4%
문항11	2,935	45.2%
문항12	6,483	99.8%
문항13	6,477	99.7%
문항14	6,467	99.5%
문항15	108	1.7%

구분	인 구 수	비율	표본	조사건수	비율
합 계	76,981	100.00%	6,500	6,498	100.00%
해남읍	25,267	32.80%	2,132	2,130	32.78%
삼산면	3,324	4.30%	281	275	4.23%
화산면	3,838	5.00%	324	317	4.88%
현산면	3,434	4.50%	290	278	4.28%
송지면	6,959	9.00%	588	580	8.93%
북평면	3,231	4.20%	273	291	4.48%
북일면	2,340	3.00%	198	228	3.51%
옥천면	3,484	4.50%	294	285	4.39%
계곡면	2,512	3.30%	212	232	3.57%
마산면	2,880	3.70%	243	238	3.66%
황산면	5,928	7.70%	501	488	7.51%
산이면	4,670	6.10%	394	401	6.17%
문내면	4,736	6.20%	400	389	5.99%
화원면	4,378	5.70%	370	366	5.63%

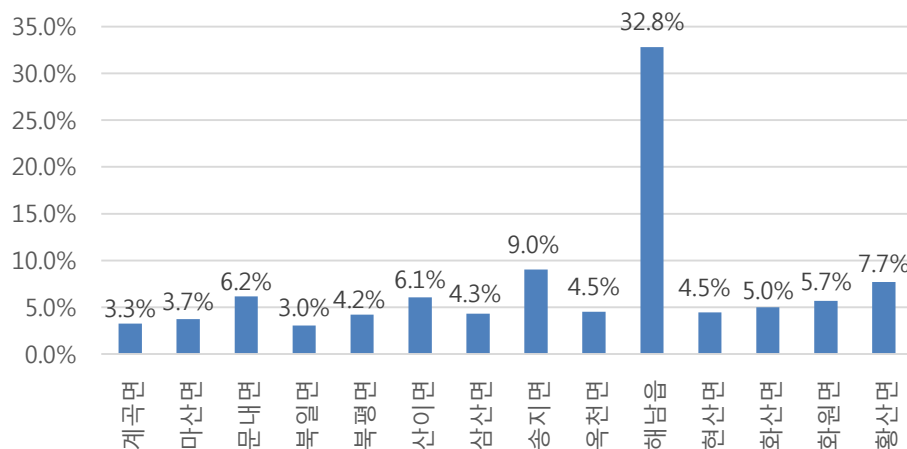
1. 응답자 성별



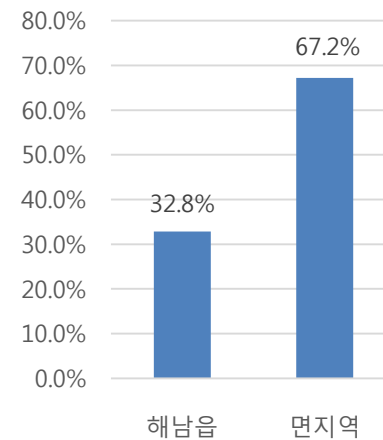
2. 응답자 연령



3. 지역별 조사건수



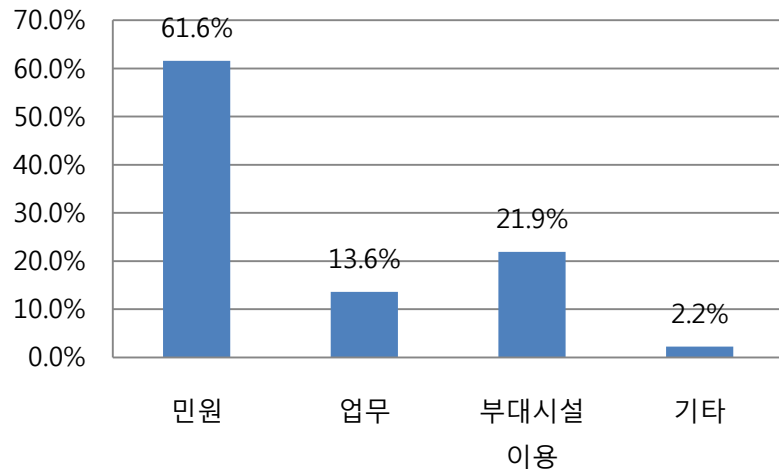
3. 읍 vs 면지역



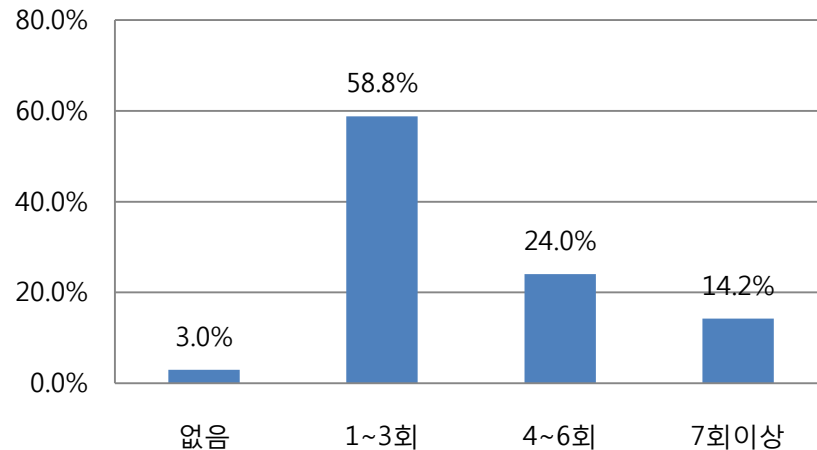
4. 거주기간

최대 : 75년
최소 : 3년
평균 : 34.4년

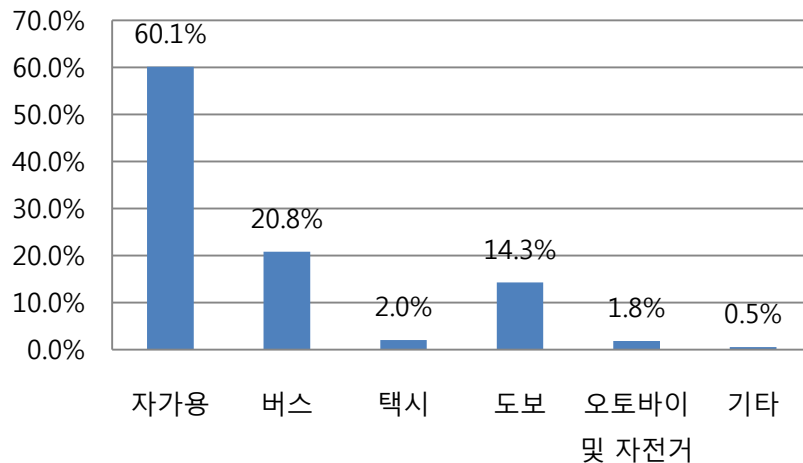
5.군청 방문 목적



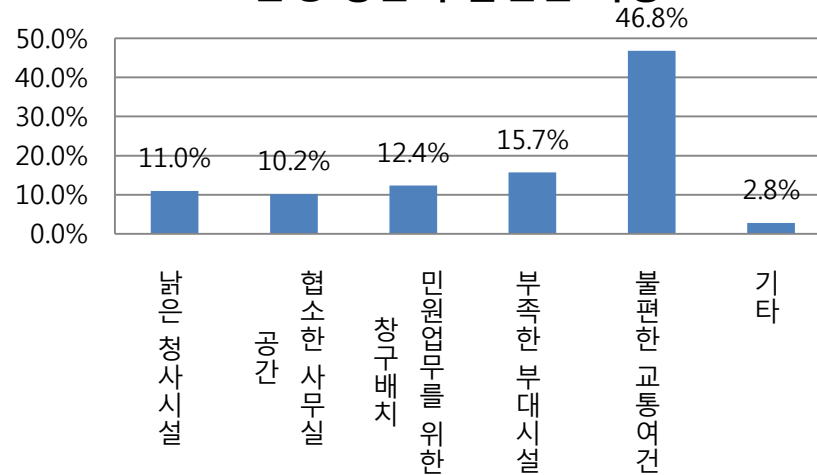
6.군청 방문 횟수(1년기준)



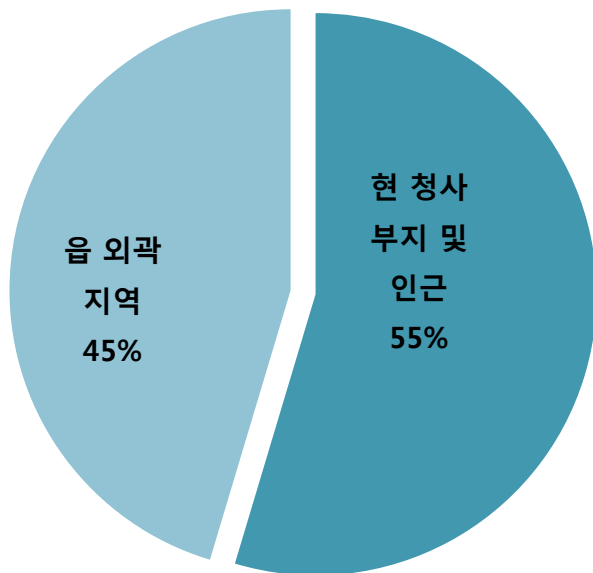
7.군청 방문시 교통수단



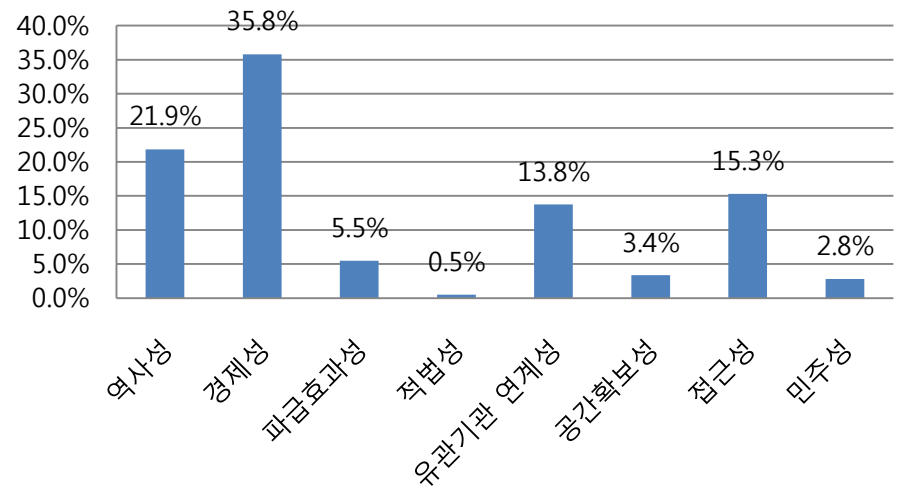
8.군청 방문시 불편한 사항



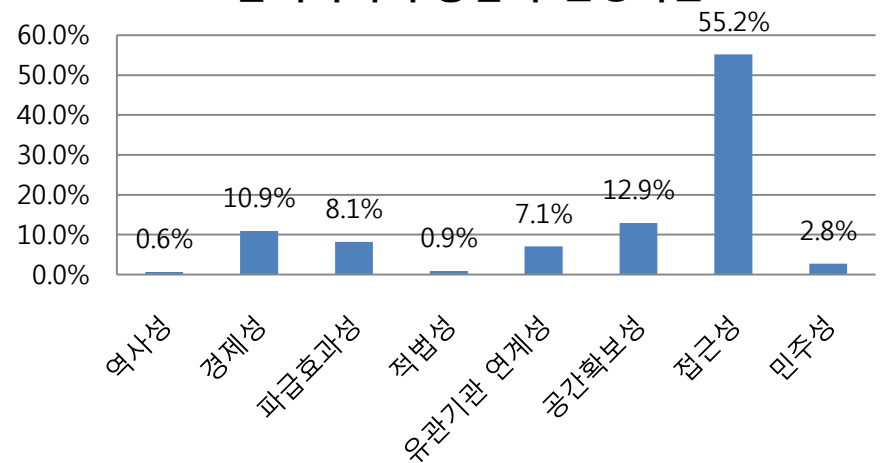
9. 신축시 위치선정



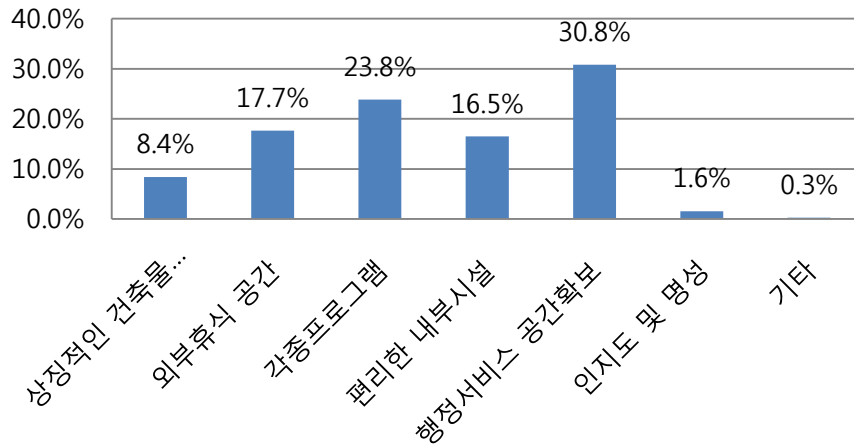
10. 현청사부지인근 응답자 선정기준



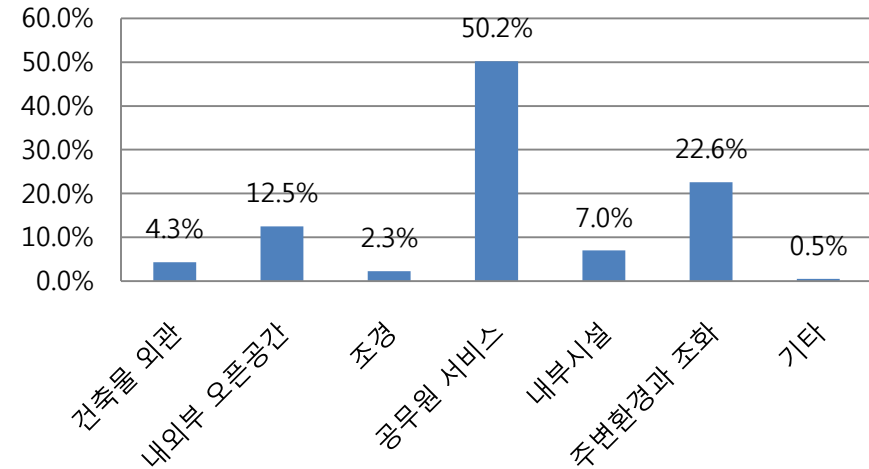
11. 읍외곽지역 응답자 선정기준



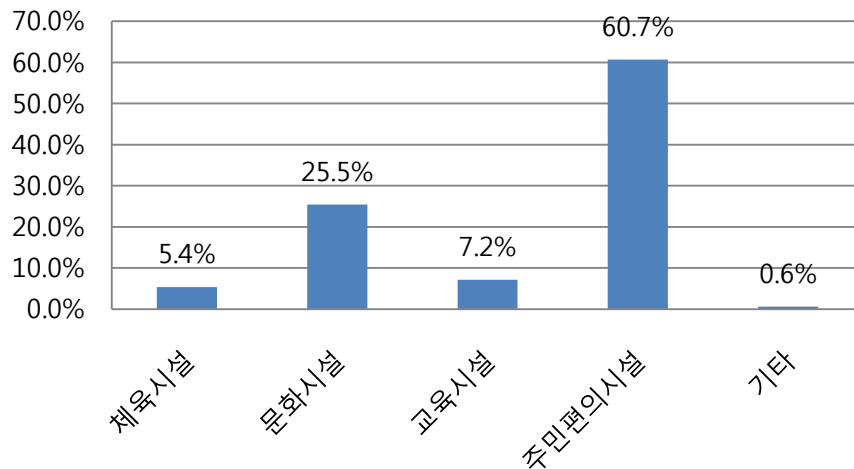
12. 설계시 고려사항



13.이용자에게 가장 친근감을 주는 요소



14.행정기관이외 가장 필요한 공간



읍, 면지역별 신축시 위치선정

